



GAT MONTHLY MEMBERSHIP PROGRESS REPORT

Results as of: 12/31/2020

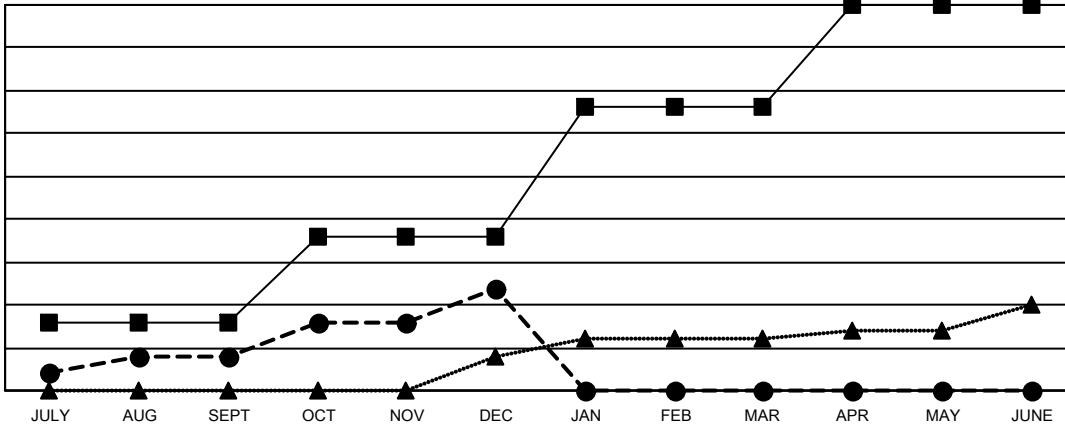
Multiple District 4

LOCATION: CALIFORNIA

| Clubs | | | |
|-----------------------|---------------|-----------|---------------|
| RESULTS FOR 2020-2021 | | | |
| QUARTER | NEW CLUB GOAL | NEW CLUBS | DROPPED CLUBS |
| JULY/AUG/SEPT | 8 | 4 | 6 |
| OCT/NOV/DEC | 10 | 8 | 2 |
| JAN/FEB/MAR | 15 | 0 | 0 |
| APR/MAY/JUNE | 12 | 0 | 0 |

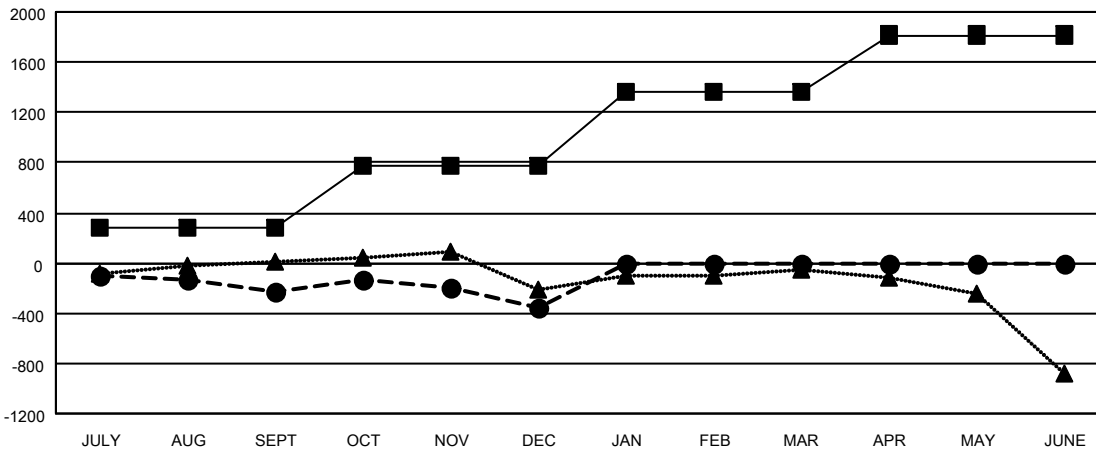
| Members | | | |
|-----------------------|------------------------|----------------------|--|
| RESULTS FOR 2020-2021 | | | |
| QUARTER | MEMBER GROWTH NET GOAL | MEMBER GROWTH ACTUAL | DROPPED MEMBERS ACTUAL (including transfers) |
| JULY/AUG/SEPT | 287 | 682 | 821 |
| OCT/NOV/DEC | 487 | 684 | 773 |
| JAN/FEB/MAR | 583 | 0 | 0 |
| APR/MAY/JUNE | 460 | 0 | 0 |

GOALS AND ACTUAL NEW CLUBS CUMULATIVE



- - CURRENT YEAR GOALS FOR NEW CLUBS
- - CURRENT YEAR ACTUAL NEW CLUBS
- ▲ - LAST YEAR ACTUAL NEW CLUBS

GOALS AND ACTUAL MEMBERS CUMULATIVE



- - MEMBER GROWTH NET GOAL
- - MEMBER GROWTH ACTUAL
- ▲ - LAST YEAR MEMBERSHIP ACTUAL

| | |
|------------------------|--------------|
| DROPPED CLUBS: 8 | |
| <u>DROPPED MEMBERS</u> | |
| DECEASED | 149 |
| CLUB CANCELLED | 47 |
| OTHER | 1,396 |
| TOTAL | 1,592 |

248 CLUBS OF 720 ADDED 1 OR MORE NEW MEMBERS

| <u>GENDER DISTRIBUTION</u> | |
|----------------------------|-----------------|
| MALE | 10,949 (60.43%) |
| FEMALE | 7,168 (39.57%) |

[CLICK HERE FOR CUMULATIVE MEMBERSHIP DATA](#)

| | |
|---------------------------------|-------|
| TOTAL FAMILY UNIT MEMBERS | 3,440 |
| FAMILY MEMBERS PAYING HALF DUES | 1,801 |